

Let's get started



roksan.com/atessa-support



Atessa Streaming Amplifier Quick Start Guide

ROKSAN

Dimensions & Material

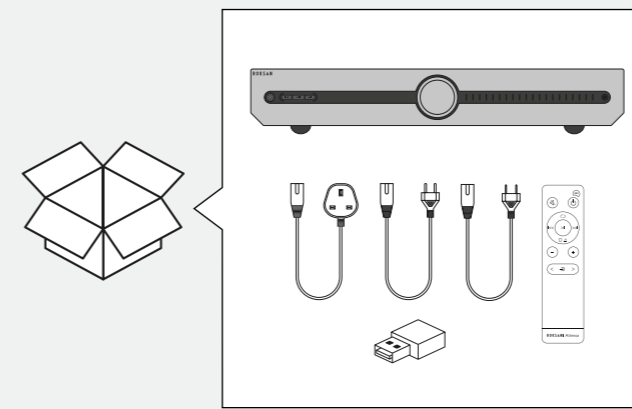
Dimensions (Inc. Connect & Encoder)	H76 x W432 x D383 mm
Dimensions (Exc. Connect & Encoder)	H76 x W432 x D346 mm
Weight	10.2 Kg
Construction	Formed plated steel and bespoke machined anodised aluminium front panel
Power Amplifier	
Power Output (8 Ohms)	80Wrms Both Channels Driven, Nominal (THD+N <1%)
Power Output (4 Ohms)	130Wrms Both Channels Driven, Nominal (THD+N <1%)
THD+N	<0.02% (1KHz, 2 channels, 1W@8 Ohms, A-Weighted)
Amplifier Type	Class AB
Gain	29dB
Channel Separation	>75dB @10kHz
Channel Matching	<0.5dB
Signal to Noise Ratio	>80dBa 1W/8R, >98dBa 75W/8R
Frequency Response	5Hz to 50KHz (-3dB)
Mains Transformer Rating	400VA
Pre-Amplifier	
Volume Channel Matching	<0.25dB
THD+N	0.002% (1KHz, 2Vrms at Pre-Out)
Signal to Noise Ratio	>104dB (unweighted)
RIAA (Phono)	47k/56p loading; gain settings suitable for 12mV, 6mV, 3mV output cartridges
Bluetooth*	
Bluetooth* Type	A2DP Audio profile
Bluetooth* Codecs	SBC, aptX™, AAC
Bluetooth* Range	15m (typical)

Digital Inputs

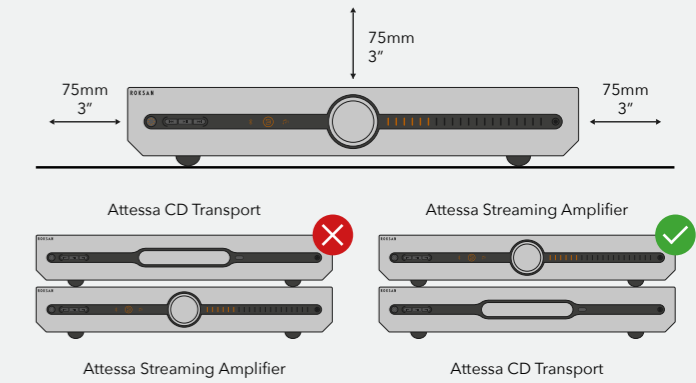
Digital Coax Input	up to 24bit/192kHz PCM
Digital Optical Input	up to 24bit/96kHz PCM
DAC	
Format Support	PCM
Sampling Rate	up to 192KHz/24bit
THD+N	0.001% (1KHz, 2Vrms at Pre-Out)
Signal to Noise Ratio	106dB (A-Weighted)
BluOS	
Audio Formats	MP3, AAC, WMA, OGG, WMA-L, ALAC, OPUS
Hi-Res Audio Formats	MQA, FLAC, WAV, AIFF Supports converted DSD playback via the BluOS desktop app
Sampling Rate	Up to 32 bit / 192kHz
Supported Operating Systems (BluOS Controller App)	Desktop (Minimum Spec) Windows 7 SP1 or above / macOS 10.9 Mavericks or above Mobile (Minimum Spec) iOS 9.3 or above / Android 5.0 Lollipop or above / Fire OS 5.0 or above
Supported Cloud Services	Amazon Alexa, Amazon Music, Spotify, TIDAL, Deezer, Qobuz, HDTracks, HighResAudio, Murfie, JUKE, Napster, Slacker Radio, KKBox, Bugs
Free Internet Radio	Tuneln Radio, iHeartRadio, Calm Radio, Radio Paradise
Control Integrations	Crestron, Control4 (OS 3), Control4 (2.9.1), RTI, URC, Push, Lutron, ELAN, iPort
Power Supply	
Mains input	IEC Connector on rear panel Mains transformer will self-select for either 100-130 VAC 50/60Hz 210-240 VAC 50/60Hz (Operational down to 85VAC with reduced output power)



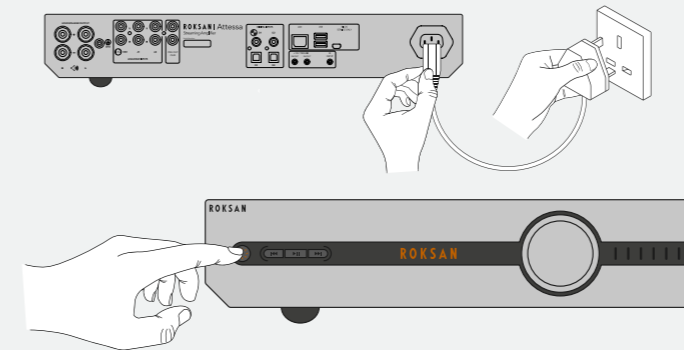
The BluOS logo is a trademark of Bluesound.
Apple and AirPlay are trademarks of Apple Inc., registered in the U.S. and other countries.
Qualcomm is a trademark of Qualcomm Incorporated, registered in the United States and other countries. aptX is a trademark of Qualcomm Technologies International, Ltd., registered in the United States and other countries.
Bluetooth* is a registered trademark of Bluetooth SIG, Inc.



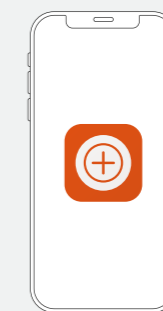
1 Place in suitable location



2 Power on



3 Download MaestroUnite App

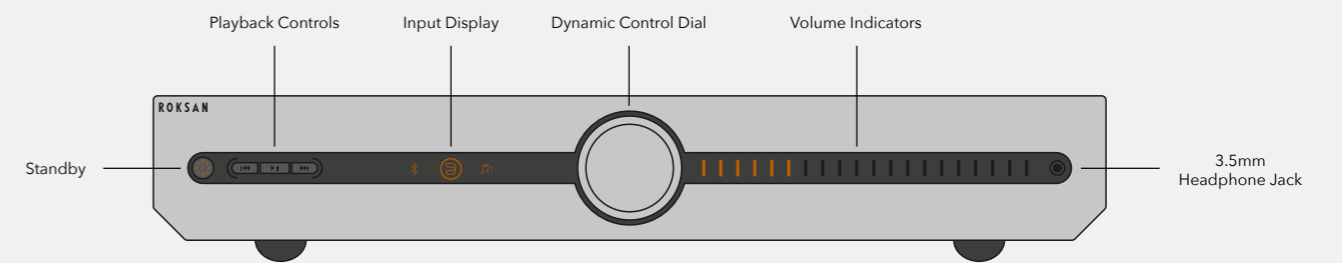


Follow the instructions on the app to finish setting up your product.

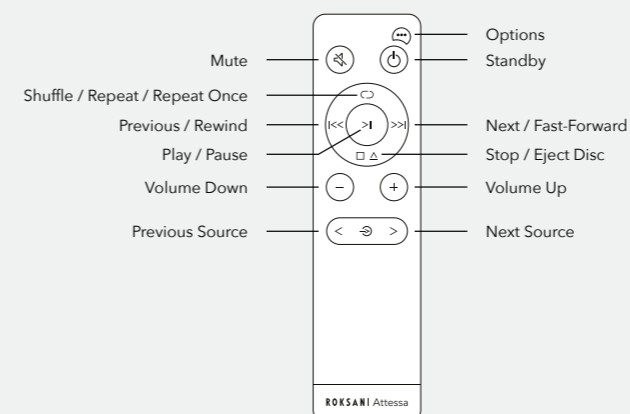
Already have MaestroUnite?
Open the app, select + then follow setup



Controls and Navigation

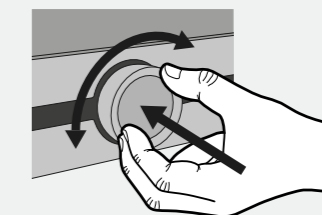


Using the Remote Control

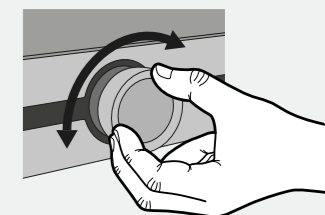


Using the Dynamic Control Dial

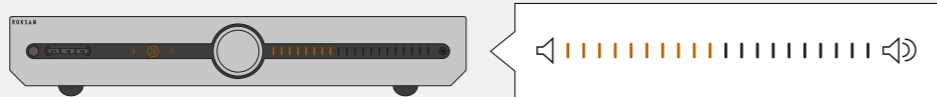
Change Source →



Volume ↻

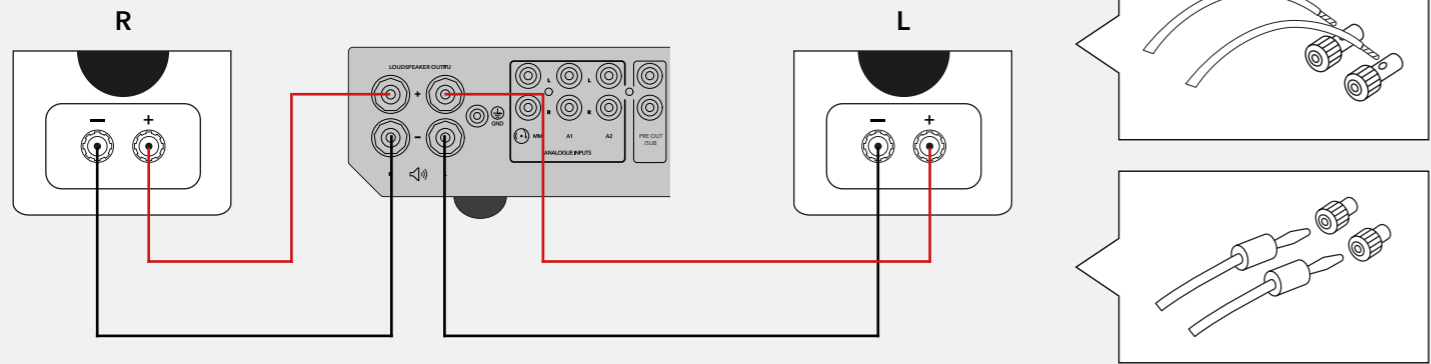


Input Display Icons and Volume

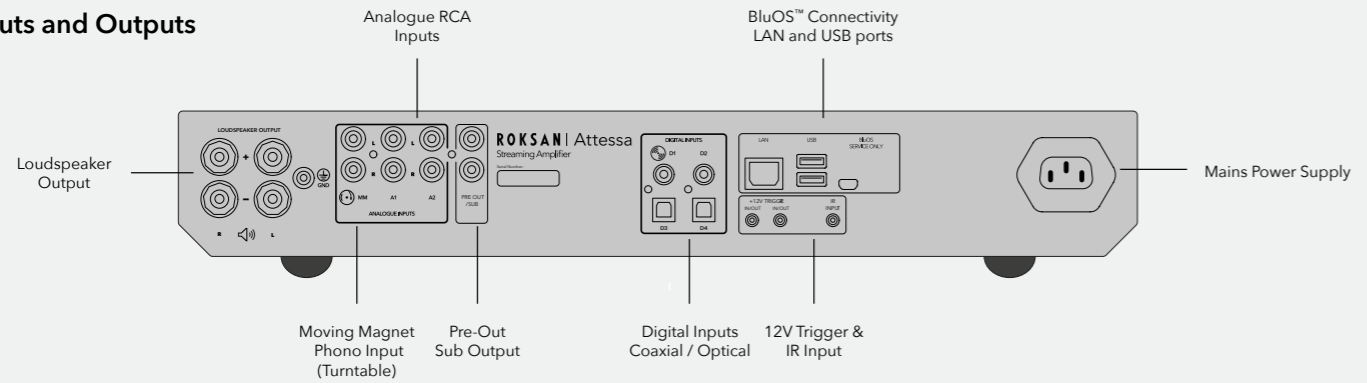


A1 Analogue RCA	A2 Analogue RCA	 MM Phono (Turntable)	 CD (D1)	D2 Digital Coaxial (D2)	D3 Digital Optical (D3)	D4 Digital Optical (D4)	 Bluetooth*	 BluOS	 BluOS Preset 1	 BluOS Preset 2	 BluOS Preset 3
 Mute			 Repeat All			 Repeat Once			 Shuffle		
 MQA MQA Track			 MQA MQA Studio Track								

Connecting loudspeakers



Inputs and Outputs

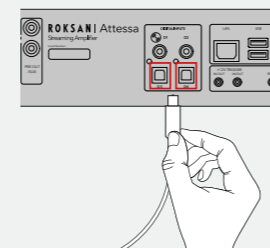
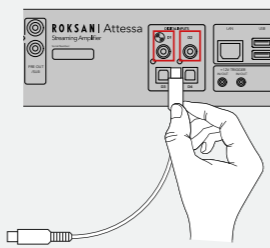
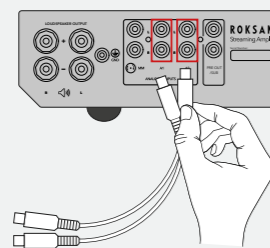
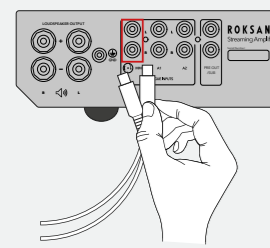


Moving Magnet Phono
Attesa Turntable
or Passive Turntable

Analogue RCA
A1 / A2

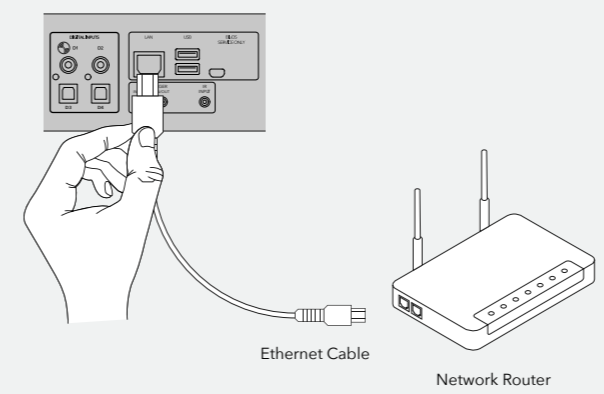
Digital Coaxial
D1 (CD) / D3

Digital Optical
D2 / D4

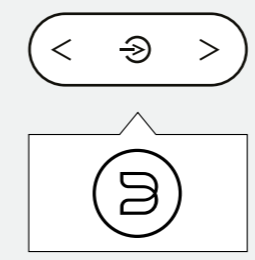
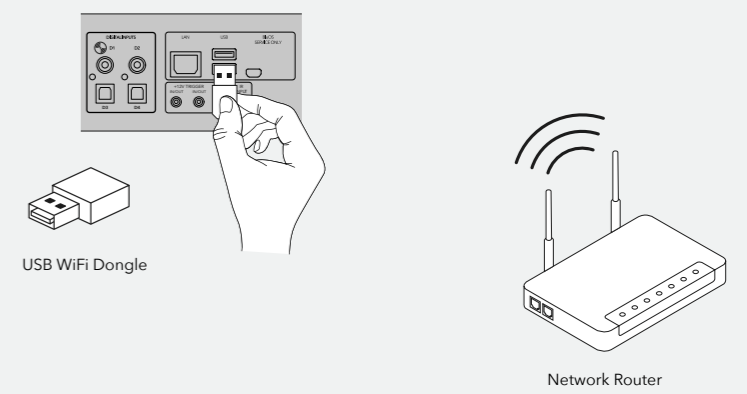


Using BluOS™

Wired connection



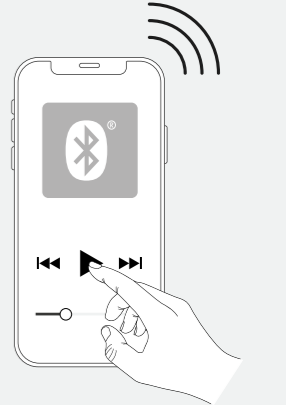
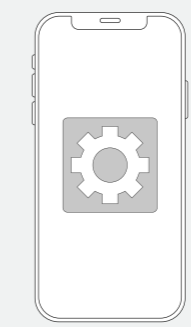
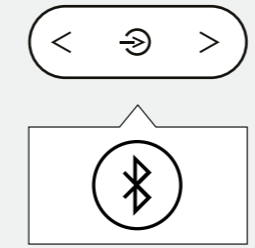
Wireless connection



Download BluOS Controller App

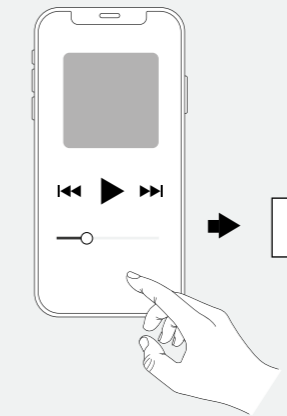
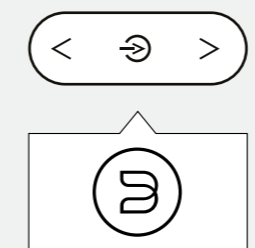


Using Bluetooth®



Using AirPlay 2®

iOS, iPadOS, macOS
and tvOS devices only



Attesa XX-XX

